



Skillswise[®]
Imparting Skills-Impacting lives!



NETWORKING TOOLS


NETWORKING TOOLS



- Acrylic Wi-Fi
 - Aircrack-ng
 - Airmon-ng
 - Ansible
 - Apache HTTP Server
 - Arbor Networks APS
 - AWS Virtual Private Cloud (VPC)
 - BGP4 Simulator
 - BIND DNS Server
 - Bitvise SSH Client
 - BlueCat DNS/DHCP Server
 - BlueJeans
 - Brocade Network Advisor
 - Burp Suite
 - Cacti
 - Cain and Abel
 - Charles Proxy
 - Check Point Next-Generation Firewall
 - Check Point SmartConsole
 - Cisco Adaptive Security Appliance (ASA)
- 

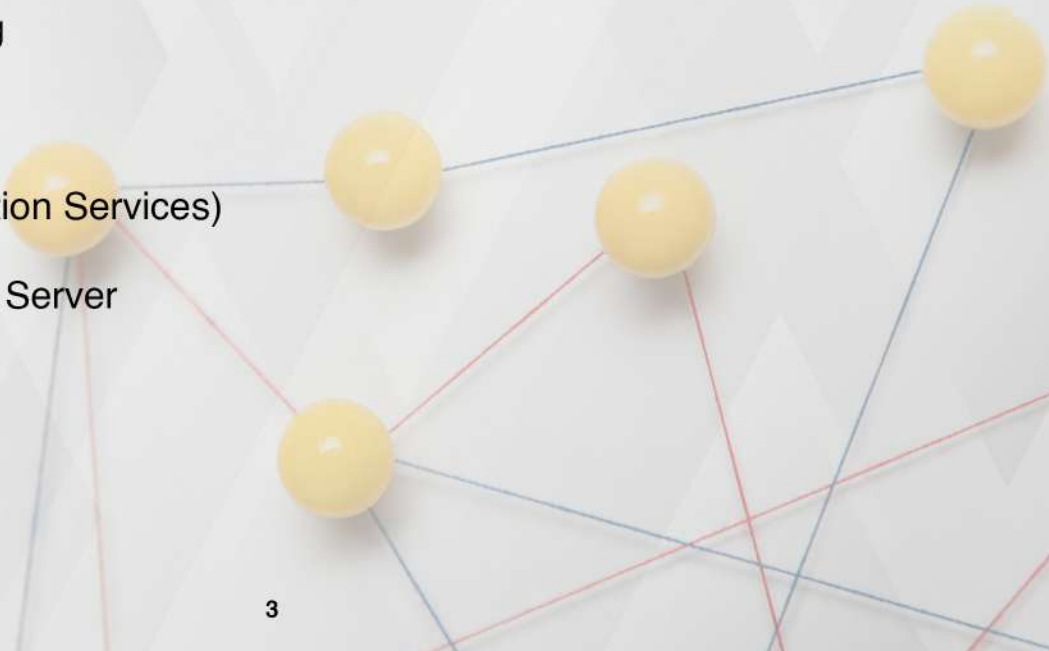
NETWORKING TOOLS



- Cisco Adaptive Security Device Manager (ASDM)
 - Cisco Network Assistant
 - Cisco Packet Tracer
 - Cisco Security Manager
 - Cisco UCS Manager
 - Cisco Webex Meetings
 - Citrix XenServer
 - Cyberduck
 - Darkstat
 - Dell EMC Unity
 - Ekahau HeatMapper
 - Elasticsearch
 - ELK Stack
 - EVE-NG
 - Extreme Management Center
 - F5 BIG-IP Application Security Manager (ASM)
 - F5 BIG-IP Centralized Management
 - Fiddler
 - FileZilla
 - Fortinet FortiGate
- 

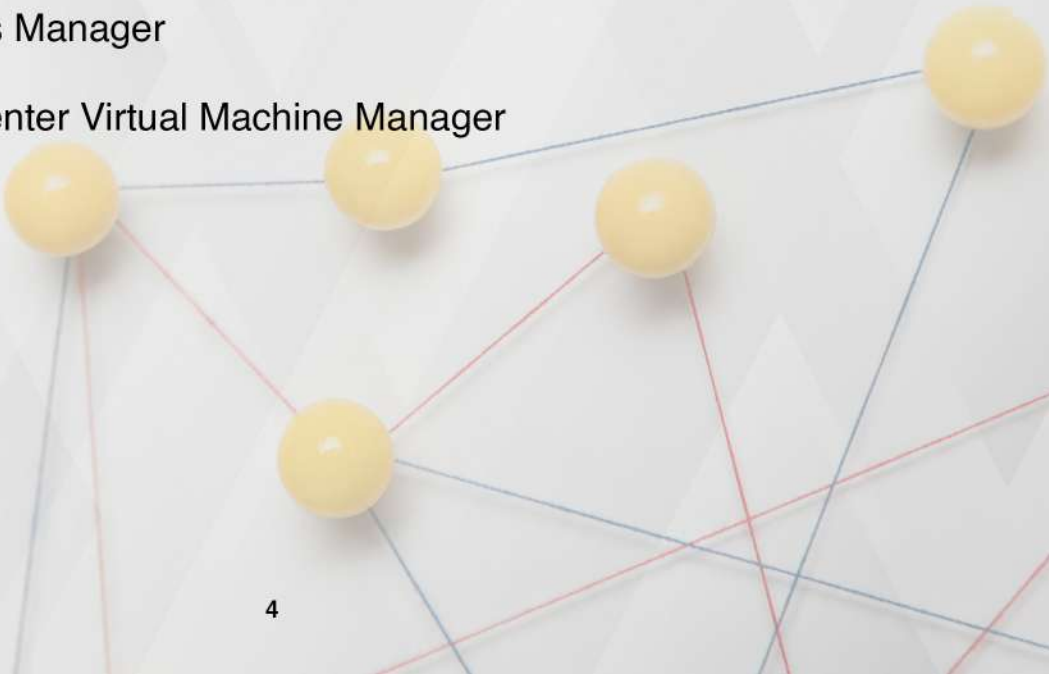
NETWORKING TOOLS



- Fortinet FortiManager
 - Fping
 - GNS3
 - Google Cloud Virtual Private Cloud (VPC)
 - Google Meet
 - GoToMeeting
 - Graphite
 - Graylog
 - HAProxy
 - Hashcat
 - HPE Intelligent Management Center (IMC)
 - HPE OneView
 - Hping
 - IBM Spectrum Control
 - IBM Tivoli Monitoring
 - Icinga
 - IIS (Internet Information Services)
 - Infoblox DNS/DHCP Server
 - inSSIDer
 - Iptraf
- 

NETWORKING TOOLS

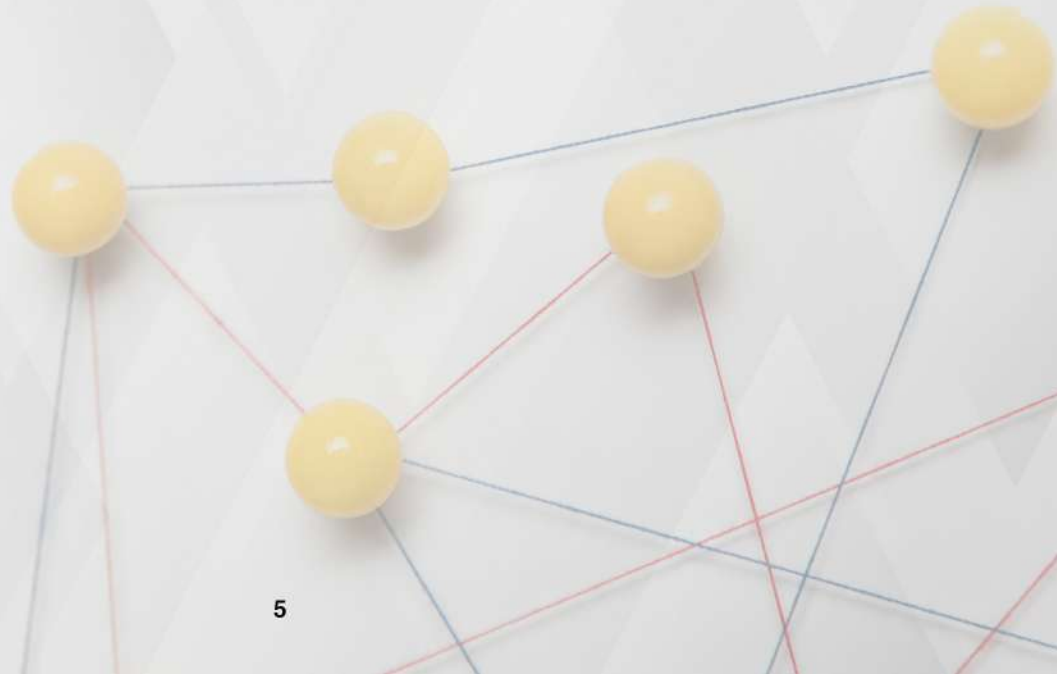


- John the Ripper
 - Juniper Networks Junos Space Security Director
 - Juniper SRX Series Services Gateways
 - Kibana
 - Kismet
 - Kiwi Syslog Server
 - Kubernetes
 - LibreNMS
 - LogMeIn
 - Logstash
 - ManageEngine OpManager
 - McAfee ePolicy Orchestrator (ePO)
 - Metasploit Framework
 - Microsoft Network Monitor
 - Microsoft Operations Manager
 - Microsoft System Center Virtual Machine Manager
 - Microsoft Teams
 - MRTG
 - Mtr
 - Nagios Fusion
- 

NETWORKING TOOLS



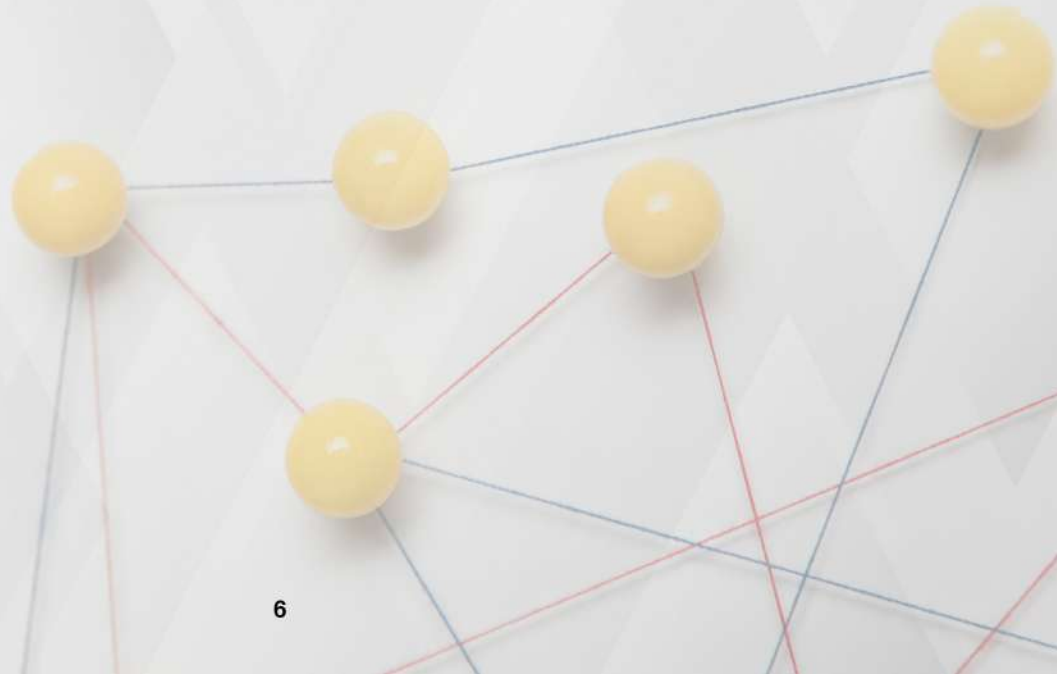
- Nagios Log Server
- Nagios XI
- Nessus
- NetBrain
- Netcat
- Netdata
- NetFlow Analyzer
- NetIQ AppManager
- NetSim
- NetSpot
- Netstat
- NetStumbler
- NetXMS
- NGINX
- Ngrep
- Nikto
- Nmap
- NSD DNS Server
- Ntopng
- Nutanix Prism



NETWORKING TOOLS



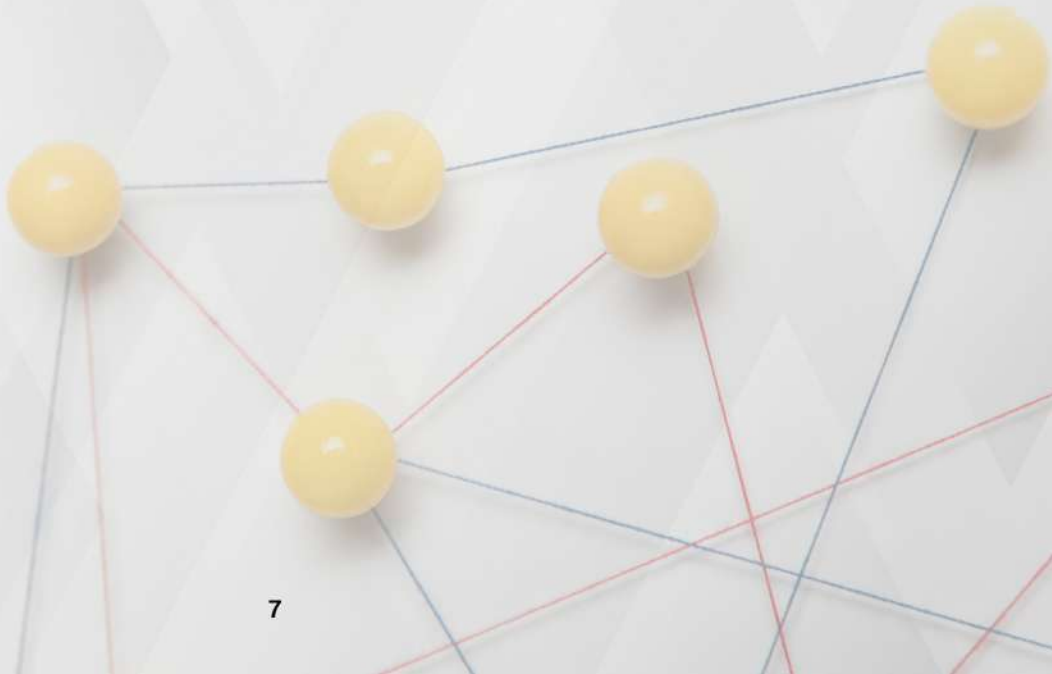
- Observium
- OpenManage Enterprise
- OpenNMS
- OpenSSH
- OpenStack
- OpenVAS
- OpenVPN
- Oracle Enterprise Manager
- OWASP ZAP
- Packet Tracer
- Paessler PRTG
- Palo Alto Networks Next-Generation Firewall
- Palo Alto Networks Panorama
- Pfsense
- Ping
- Pingdom
- PingPlotter
- Plixer Scrutinizer
- Postman
- PowerDNS Server



NETWORKING TOOLS



- Privoxy
- PRTG Network Monitor
- Puppet
- Pure Storage FlashArray
- Putty
- Puttygen
- QualysGuard
- Radware DefensePro
- RANCID
- Reaver
- Red Hat Virtualization
- Riverbed SteelCentral
- Riverbed SteelCentral NetPlanner
- RouterSim
- Rsyslog
- Shadowsocks
- Skype for Business
- Slack
- SmokePing
- SoapUI



NETWORKING TOOLS



- SolarWinds Database Performance Analyzer
- SolarWinds Firewall Security Manager
- SolarWinds Kiwi CatTools
- SolarWinds Network Performance Monitor
- SolarWinds Server & Application Monitor
- SolarWinds Storage Resource Monitor
- SolarWinds Virtualization Manager
- SonicWall Next-Generation Firewall
- Sophos XG Firewall
- Splunk
- Squid Proxy Server
- Ssh
- Symantec Endpoint Protection Manager
- Syslog-ng
- Tcpdump
- Tcpdump-libpcap
- TeamViewer
- Telnet
- Traceroute
- Trend Micro Control Manager

NETWORKING TOOLS



- Tshark
 - UNetLab
 - Veeam ONE
 - VIRT
 - VMware vSphere
 - VNC Viewer
 - Wi-Fi Analyzer
 - WinSCP
 - Wireshark
 - Zabbix
 - Zenmap
 - Zenoss
 - Zoom
 - Cisco Certified Network Associate (CCNA)
 - Cisco Certified Network Professional (CCNP)
 - CompTIA Network+
 - Certified Information Systems Security Professional (CISSP)
 - Juniper Networks Certified Professional (JNCIP)
 - AWS Certified Advanced Networking
 - VMware Certified Professional
 - Microsoft Certified: Azure Network Engineer Associate
- 



Contact us

For the best course that you can have,
you may contact us with our details below

s-1, #65, Eldams Road, Alwarpet, Chennai, Tamilnadu, India-600018
044-2435 3310 | 91- 72000 27310



Skillwise-corporate-Training



Skillwise-Group



Skillwise-corporate-Training



Skillwise-consulting